

Tray/carton erectors

TFP750 | Pneumatic tray/carton erector

Standard technical specifications

Speed: Up to 20 CPM

Board size: 750mm x 750mm board blank

Board magazine stack height: 1000mm

Board loading height: 1020mm

Tray outfeed height: 400mm

Sample power consumption: 5.2Kw, 16A/Ph, 400V, 3 Phase, N&E

Air supply: Up to 16 cfm @ 80 psi (5 bar)

Net weight: 500Kg

Glue: Preo hot melt glue system

Specific components: Rockwell Controls, SMC Pneumatics

Colour: RAL 7035 grey

Board specification

Tray/carton styles: Low/High Walled, Shelf Ready, 90° and mitred corners and pizza

Materials: Fibre board and fluted corrugate

FEFCO styles: 0300, 0301, 0415 and 0420.

Can be adapted to suit most 03 and 04 styles

Options

Vertical or horizontal card magazine

Nordson or Meler hot melt glue system

Crash lock system for hand erect trays

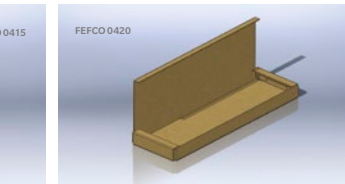
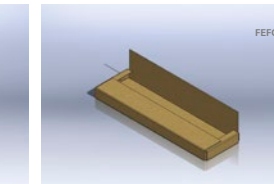
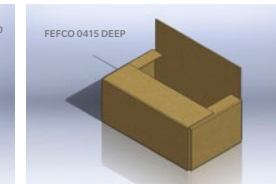
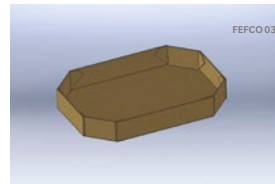
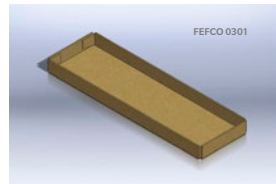
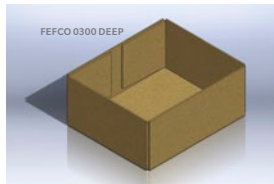
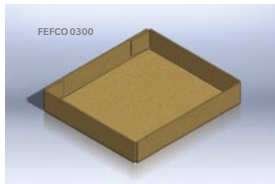
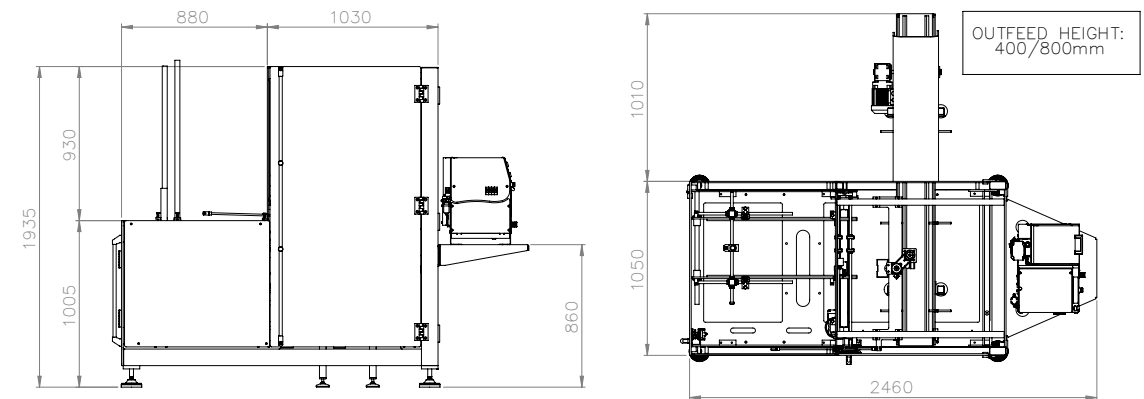
Inline and right angle discharge

Changepart or adjustable forming tools

On demand multiple size tray forming

Conveyors

Automatic or robotic tray/carton loading and closing



For more information, contact: WestRock Automated Packaging Systems
Phone: +44.0.1502.713777 • E-mail: aps.uk@westrock.com • www.linkxpackaging.com

