

Robot palletisers

RP2-KR180-C2-P1 | Robot palletiser

Standard technical specifications

Max Load: 180Kg (inc. gripper)

Concept: Automatic

Number of pick up points: 1

Number of pallet load positions: 2

Axis: 4 axis robot

Pallet sizes: Euro 800x1200mm, Chep 1000x1200mm

Max loaded pallet height: 1800mm

Product Infeed height: 500mm to 1500mm

Pallet outfeed height: Floor to 600mm

Sample power consumption: 8Kw, 0.82A/Ph, 400V, 3 Phase, N&E
(Product and Gripper dependant)

Sample air supply: Up to 16.8 cfm @ 80 psi (6 bar)
(Product and Gripper dependant)

Typical net weight: 1000Kg

Specific components: Kuka, Rockwell Controls, SMC Pneumatics

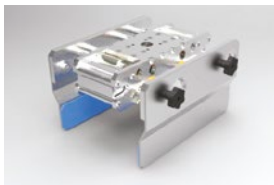
Colour: RAL 7035 grey

Typical gripper options

VACUUM GRIPPER



PADDLE GRIPPER



GANTRY GRIPPER



Options

Schneider partnership/Siemens controls

Product infeed conveyors

Pallet conveyors

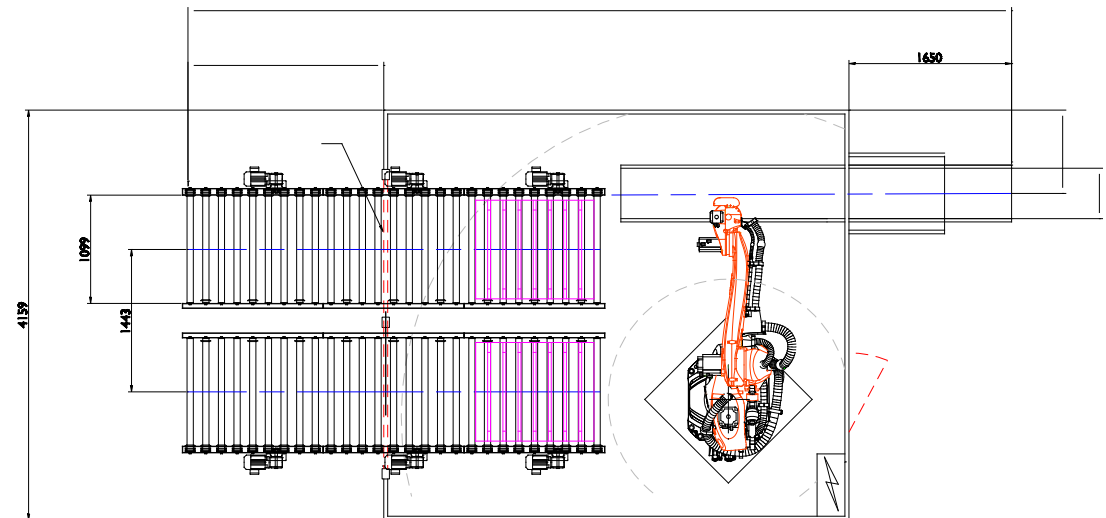
Layer pad store

Pallet store

Robot selection to suit payload and product requirements

6 axis robot

Gripper and end effector variants



For more information, contact: WestRock Automated Packaging Systems
Phone: +44.0.1502.713777 • E-mail: aps.uk@westrock.com • www.linkxpackaging.com