



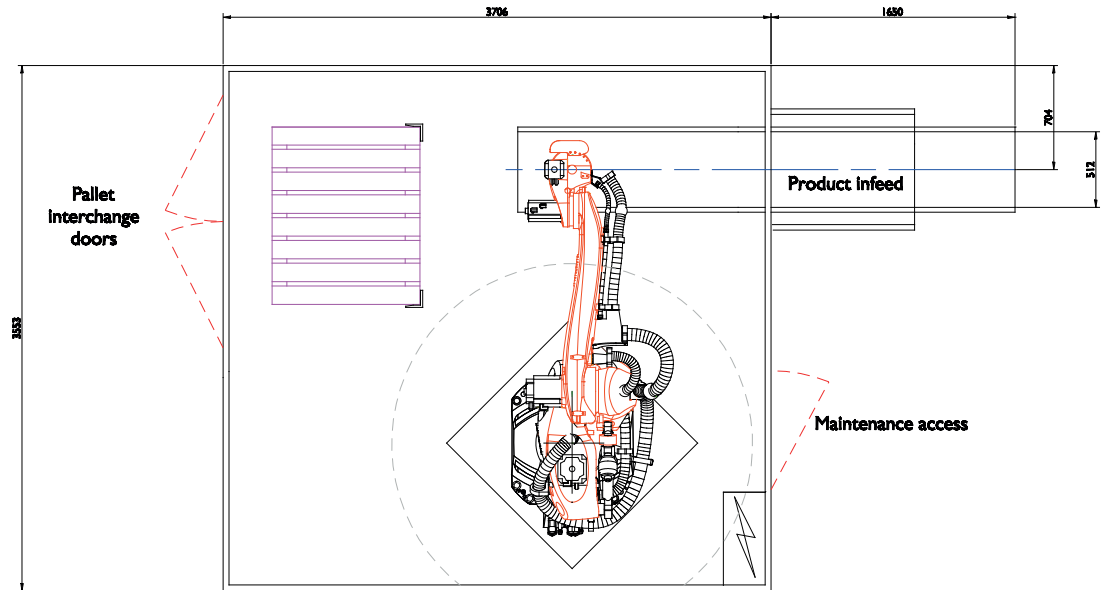
# RP-KR120-P1 ROBOT PALLETISER

## RP-KR120-P1 STANDARD TECHNICAL SPECIFICATIONS

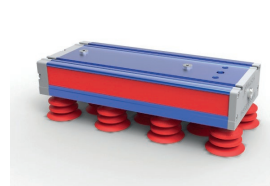
- ◆ Max Load: 120Kg (inc. gripper)
- ◆ Concept: Semi-auto
- ◆ Number of Pick Up Points: 1
- ◆ Number of Pallet Load Positions: 1
- ◆ Axis: 4 axis robot
- ◆ Pallet sizes: Euro 800x1200mm, Chep 1000x1200mm
- ◆ Max loaded Pallet Height: 1800mm
- ◆ Product Infeed Height: 500mm to 1500mm
- ◆ Pallet Outfeed Height: Floor to 600mm
- ◆ Sample Power Consumption: 8Kw, 0.82A/Ph, 400V, 3 Phase, N & E (Product and Gripper dependant)
- ◆ Sample Air Supply: Up to 16.8 cfm @ 80 psi (6 bar) (Product and Gripper dependant)
- ◆ Typical Net Weight: 1000Kg
- ◆ Specific Components: Kuka, Rockwell Controls, SMC Pneumatics
- ◆ Colour: RAL 7035 Grey

## OPTIONS

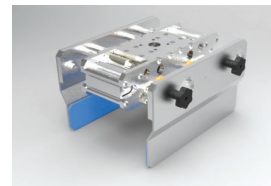
- ◆ Schneider partnership / Siemens controls
- ◆ Product infeed conveyors
- ◆ Pallet conveyors
- ◆ Layer pad store
- ◆ Pallet store
- ◆ Robot selection to suit payload and product requirements
- ◆ 6 axis robot
- ◆ Gripper and end effector variants



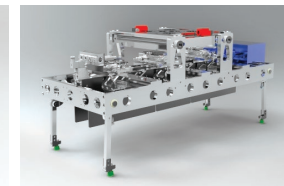
VACUUM GRIPPER



PADDLE GRIPPER



GANTRY GRIPPER



JAW GRIPPER

