



CF-600-T4 CASE/CARTON ERECTOR

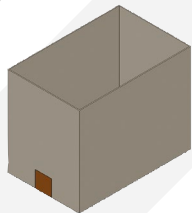
CF-600-T4 STANDARD TECHNICAL SPECIFICATIONS

- ◆ Speed: up to 10 CPM
- ◆ Concept: 4 sizes on demand
- ◆ Board Size: Min L320 x W250 x OH150 | Max L750 x W500 x OH650
- ◆ Board Magazine Capacity: 2400mm
- ◆ Typical Board Loading Height: 600mm
- ◆ Outfeed Height: 600mm
- ◆ Sample Power Consumption: 5Kw, 16A/Ph, 440V, 3 Phase, N & E
- ◆ Air Supply: Up to 15 cfm @ 80 psi (6 bar)
- ◆ Net Weight: 1250Kg
- ◆ Tape closure with 75mm or 50mm tape
- ◆ Specific Components: Rockwell Controls
- ◆ Mainframe mild steel powder coated

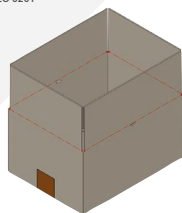
BOARD SPECIFICATION

- ◆ Case/Carton Styles: Low/High Walled, Shelf Ready
- ◆ Materials: B-flute, C-flute, E-flute or combination
- ◆ Styles: Fefco 0200, 0201 and RSC/HSC

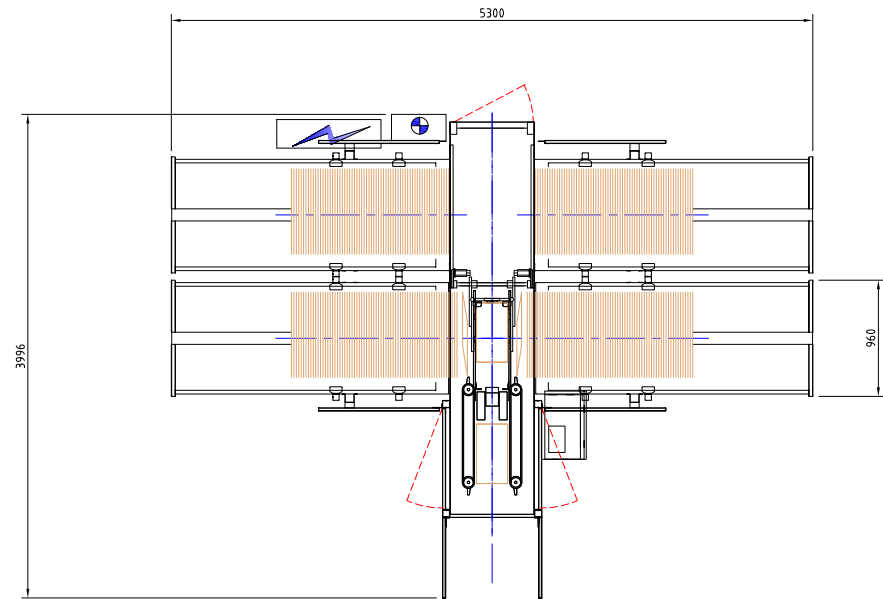
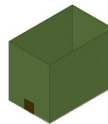
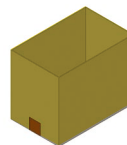
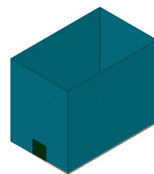
FEFCO 0200



FEFCO 0201



4 SIZES ON DEMAND



OPTIONS

- ◆ Fefco board style variants
- ◆ Oversized and undersized case variants

