



# CF-600-T2 CASE/CARTON ERECTOR

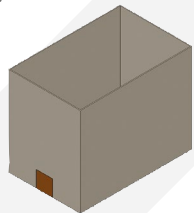
## CF-600-T2 STANDARD TECHNICAL SPECIFICATIONS

- ◆ Speed: up to 15 CPM
- ◆ Concept: 2 sizes on demand
- ◆ Board Size: Min L320 x W250 x OH150 | Max L750 x W500 x OH650
- ◆ Board Magazine Capacity: 2400mm
- ◆ Typical Board Loading Height: 600mm
- ◆ Outfeed Height: 600mm
- ◆ Sample Power Consumption: 4Kw, 12A/Ph, 440V, 3 Phase, N & E
- ◆ Air Supply: Up to 12 cfm @ 80 psi (6 bar)
- ◆ Net Weight: 1000Kg
- ◆ Tape seal on base 50mm or 75mm tape
- ◆ Specific Components: Rockwell Controls
- ◆ Mainframe mild steel powder coated

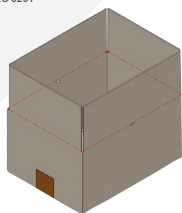
## BOARD SPECIFICATION

- ◆ Case/Carton Styles: Low/High Walled, Shelf Ready
- ◆ Materials: B-flute, C-flute, E-flute or combination
- ◆ Styles: Fefco 0200, 0201 and RSC/HSC

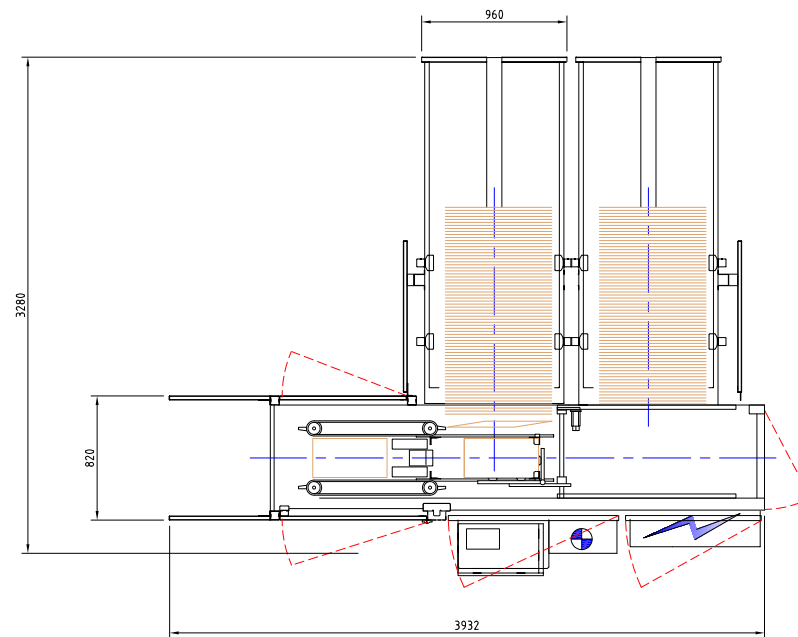
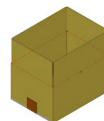
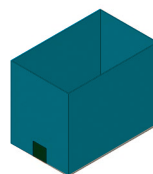
FEFCO 0200



FEFCO 0201



2 SIZES ON DEMAND



## OPTIONS

- ◆ Fefco board style variants
- ◆ Oversized and undersized case variants

