

# Gantry palletisers

## GP2-C1-PD-P1 | Gantry palletiser

### Standard technical specifications

**Speed:** Up to 10 movements/min

**Concept:** Automatic

**Number of pick up points:** 1

**Number of pallet load positions:** 1

**Axis:** 3 axis of precision servo motion

**Pallet sizes:** Euro 800x1200mm, Chep 1000x1200mm

**Max loaded pallet height:** 1800mm

**Product Infeed height:** 500mm to 1500mm

**Pallet outfeed height:** Floor to 600mm

**Sample power consumption:** 8Kw, 0.82A/Ph, 400V, 3 Phase, N&E  
(Product and Gripper Dependant)

**Sample air supply:** Up to 16.8 cfm @ 80 psi (6 bar)

**Typical net weight:** 1000Kg

**Specific components:** Rockwell Controls, SMC Pneumatics

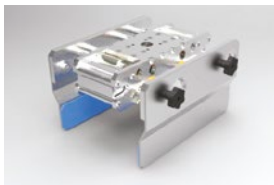
**Colour:** RAL 7035 grey

### Typical gripper options

VACUUM GRIPPER



PADDLE GRIPPER



### Options

Product infeed conveyors

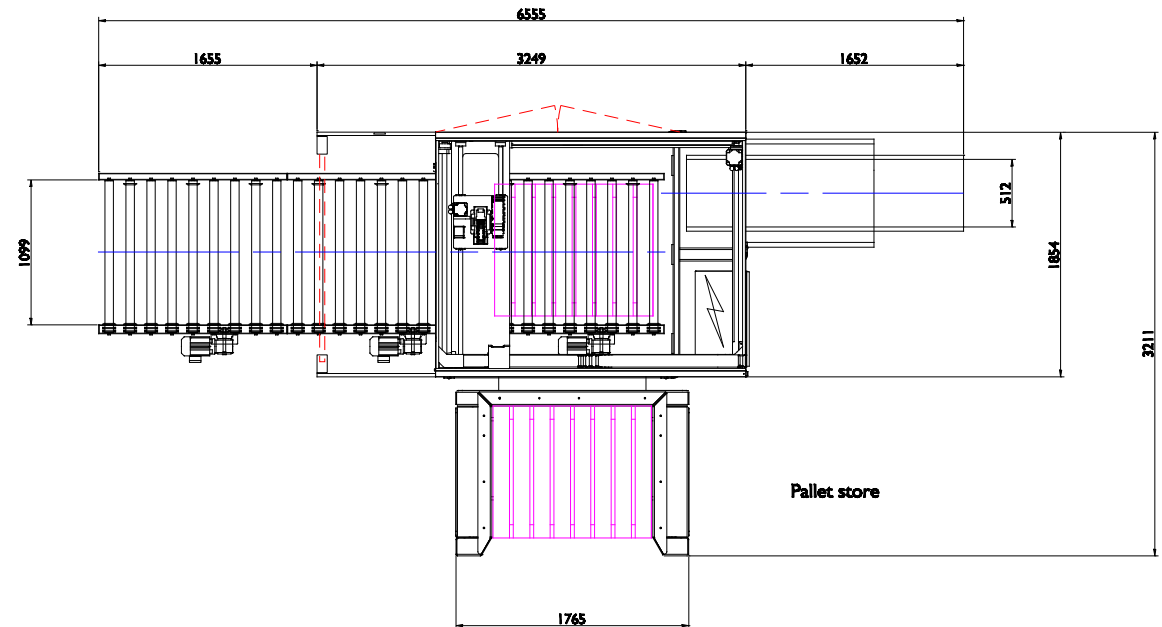
Pallet conveyors

Layer pad store

Pallet store

Low ceiling capability

Gripper and end effector variants



For more information, contact: WestRock Automated Packaging Systems  
Phone: +44.0.1502.713777 • E-mail: [aps.uk@westrock.com](mailto:aps.uk@westrock.com) • [www.linkxpackaging.com](http://www.linkxpackaging.com)