

Gantry palletisers

GP2-C2-P1 | Gantry palletiser

Standard technical specifications

Speed: Up to 10 movements/min

Concept: Automatic

Number of pick up points: 1

Number of pallet load positions: 2

Axis: 3 axis of precision servo motion

Pallet sizes: Euro 800x1200mm, Chep 1000x1200mm

Max loaded pallet height: 1800mm

Product Infeed height: 500mm to 1500mm

Pallet outfeed height: Floor to 600mm

Sample power consumption: 8Kw, 0.82A/Ph, 400V, 3 Phase, N&E
(Product and Gripper Dependant)

Sample air supply: Up to 16.8 cfm @ 80 psi (6 bar)

Typical net weight: 1000Kg

Specific components: Rockwell Controls, SMC Pneumatics

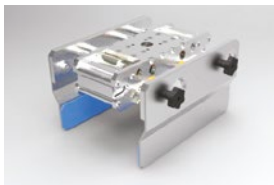
Colour: RAL 7035 grey

Typical gripper options

VACUUM GRIPPER



PADDLE GRIPPER



Options

Product infeed conveyors

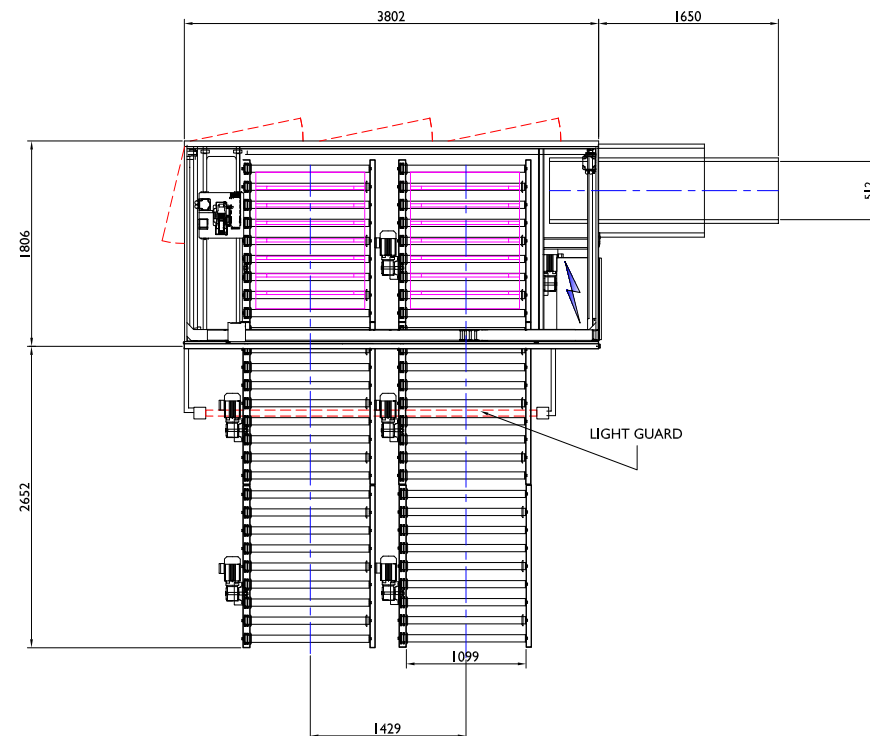
Pallet conveyors

Layer pad store

Pallet store

Low ceiling capability

Gripper and end effector variants



For more information, contact: WestRock Automated Packaging Systems
Phone: +44.0.1502.713777 • E-mail: aps.uk@westrock.com • www.linkxpackaging.com