



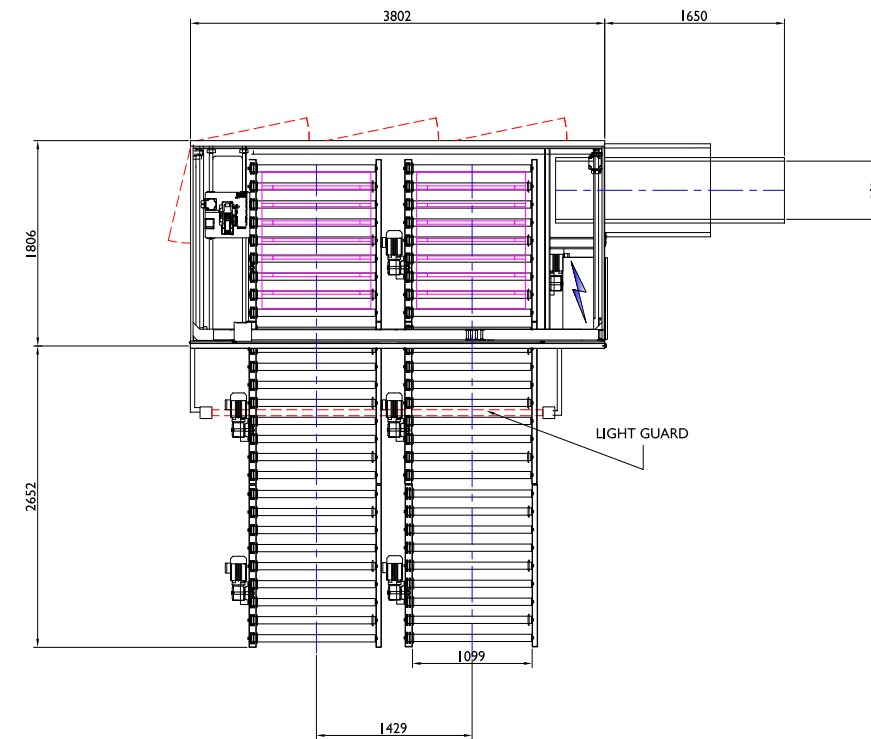
GP2-C2-P1 GANTRY PALLETISER

GP2-C2-P1 STANDARD TECHNICAL SPECIFICATIONS

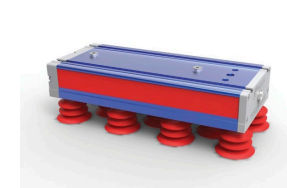
- ◆ **Speed:** Up to 10 movements/min
- ◆ **Concept:** Automatic
- ◆ **Number of Pick Up Points:** 1
- ◆ **Number of Pallet Load Positions:** 2
- ◆ **Axis:** 3 axis of precision servo motion
- ◆ **Pallet sizes:** Euro 800x1200mm, Chep 1000x1200mm
- ◆ **Max loaded Pallet Height:** 1800mm
- ◆ **Product Infeed Height:** 500mm to 1500mm
- ◆ **Pallet Outfeed Height:** Floor to 600mm
- ◆ **Sample Power Consumption:** 8Kw, 0.82A/Ph, 400V, 3 Phase, N & E (Product and Gripper Dependant)
- ◆ **Sample Air Supply:** Up to 16.8 cfm @ 80 psi (6 bar)
- ◆ **Typical Net Weight:** 1000Kg
- ◆ **Specific Components:** Rockwell Controls, SMC Pneumatics
- ◆ **Colour:** RAL 9007 Grey

OPTIONS

- | | |
|----------------------------|-------------------------------------|
| ◆ Product infeed conveyors | ◆ Pallet store |
| ◆ Pallet conveyors | ◆ Low ceiling capability |
| ◆ Layer pad store | ◆ Gripper and end effector variants |



VACUUM GRIPPER



PADDLE GRIPPER

