

# CF Case/carton erectors

## CF-2000-G | Case/carton erector

### Standard technical specifications

**Speed:** 8 to 25 CPM

**Concept:** Single size, simple adjustment between sizes

**Board size:** Min L200 x W150 x OH150 | Max L620 x W450 x OH650

**Board magazine capacity:** with 3mm B-flute - 200 blanks (1340mm)

**Board magazine format:** Right angle feed 435mm to 540mm loading height

**Outfeed height:** 600mm +/- 30mm

**Sample power consumption:** 4.4Kw, 16A/Ph, 400V, 3 Phase, N&E

**Air supply:** Up to 15 cfm @ 80 psi (6 bar)

**Net weight:** 600Kg

**Bottom closure:** Hot melt glue

**Specific components:** Rockwell or Siemens Controls

**Colour:** RAL TBC

### Board specification

**Case/carton styles:** FEFCO 0200, 0201 or HSC/RSC

**Materials:** B-flute, C-flute, E-flute or combination

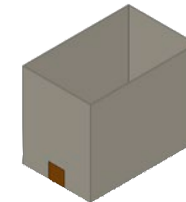
### Options

Speed variants from 8 to 25 cases per minute

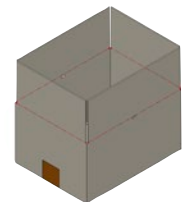
FEFCO board style variants

Oversized and undersized case variants

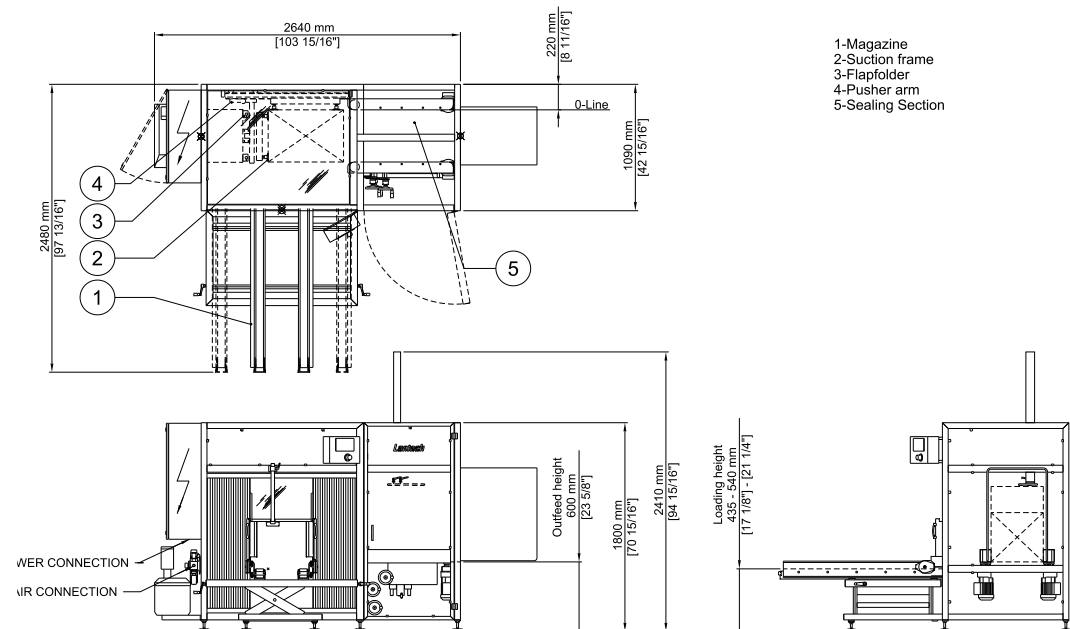
Extended board magazine



FEFCO 0200



FEFCO 0201



For more information, contact: WestRock Automated Packaging Systems  
Phone: +44.0.1502.713777 • E-mail: [aps.uk@westrock.com](mailto:aps.uk@westrock.com) • [www.linkxpackaging.com](http://www.linkxpackaging.com)

